

# WILSON TOOLING SYSTEM FOR LVD/PX MACHINES

For 100 & PX Series Machines



STRENGTH. PERFORMANCE. INNOVATION.

# TABLE OF CONTENTS

Optima® Coating .....	3
Ultima® Tool Steel .....	4
Wilson 2 • 4 • 1™ Punch System .....	5
Wilson 2 • 4 • 1™ Series Component Parts - Punch System.....	6
Tapping Tool.....	7
Increased Grind Life (GL) Dies.....	8
Pre-cut PX Strippers.....	9
Adjustable Tool Holder.....	10
Classic Punch Holder Assembly (Steel Stripper).....	11
2 • 4 • 1™ Punch Holder Assembly (Steel Stripper).....	12
2 • 4 • 1™ Punch Holder Assembly (Urethane Stripper).....	13
Wilson 2 • 4 • 1™ Series - Round.....	14
Wilson 2 • 4 • 1™ Series - Square.....	15
Wilson 2 • 4 • 1™ Series - Rectangle.....	16
Wilson 2 • 4 • 1™ Series - Standard Shapes.....	17
Size III - Round .....	18
Size III - Standard Shapes.....	19
Multi-Tool 5 Station.....	20
Multi-Tool 5 Station for 100 Series Machines.....	21
Multi-Tool 5 Station for PX Series Machines.....	22
Multi-Tool 10 Station.....	23
Multi-Tool 10 Station for 100 Series Machines.....	24
Multi-Tool 10 Station for PX Series Machines.....	25
Standard Tools - Round Size Q.....	26
Standard Tools - Square Size Q.....	27
Standard Tools - Rectangle Size Q.....	28
Standard Tools - Standard Shapes Size Q.....	29
Standard Tools - Round Size I, II.....	30
Standard Tools - Square Size I, II.....	31
Standard Tools - Rectangle Size I, II.....	32
Standard Tools - Standard Shapes Size I, II.....	33
Brushes Dies .....	34
Die Shims .....	35
Close to Form Slitting Punch.....	36
Die Adapters .....	37
Specials .....	38
Notes .....	39
Terms and Conditions .....	42
Standard Shapes .....	43

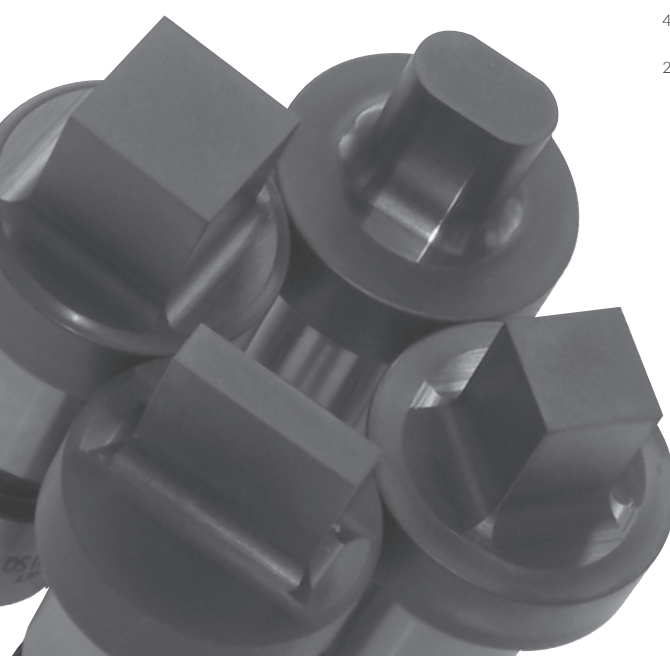
## OPTIMA® COATING

### The New Standard in Tooling Performance!

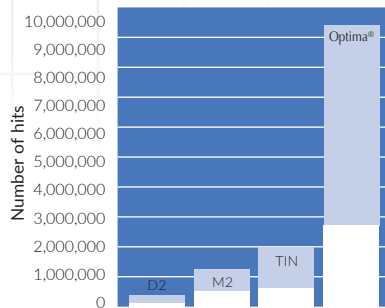
Optima® is a proprietary TiCN (titanium carbo-nitride) coating that was custom engineered at our in-house coating facilities. It features unique properties that significantly enhance tooling performance. This coating, which is available only to Wilson Tool customers, provides a level of surface hardness, wear resistance and lubricity never before associated with coated or uncoated punch press tooling.

### Some of the many benefits that you will enjoy with our Optima® coating include:

- Longer tool life
- Increased wear resistance
- More hits between sharpenings
- Reduced adhesion (galling)
- Reduced slug pulling
- Reduced corner breakdown
- Improved special tooling performance
- Lower overall tooling costs
- In-house coating facilities allow us to deliver faster and maintain total quality control

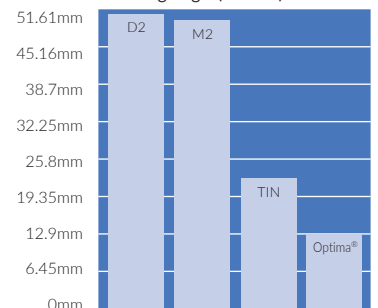


**Punch Life**  
Nibbling 14ga. (1.9 mm) 304 Stainless Steel



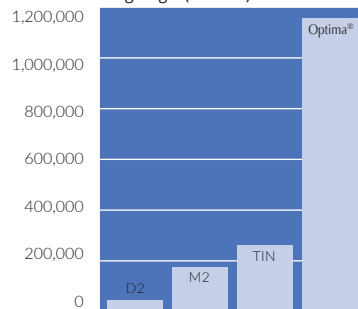
Using a 7.9 mm Round Punch  
The white area indicates actual results achieved through three tool sharpenings of 0.25 mm each. The complete graph indicates projected results with a total of 6 mm removed for sharpening.

**Material Adhesion**  
Square mm of Material Adhesion (Galling) on Punch Tips  
Nibbling 12ga. (2.1 mm) Aluminium



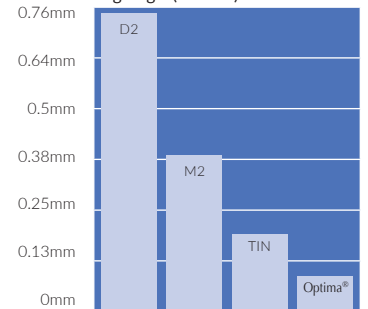
Using a 6.3 mm Square Punch (At 20,000 hits)

**Number of Hits**  
Number of Hits Before First Sharpening  
Nibbling 14ga. (1.9 mm) 304 Stainless Steel



Using a 7.9 mm Round Punch

**Tip Wear**  
Punch Tip Corner Wear  
Nibbling 14ga. (1.9 mm) 304 Stainless Steel



Using a 6.3 mm Square Punch (At 25,000 hits)

**Optima®**  
TECHNOLOGY AT THE CUTTING EDGE

# TECHNOLOGY FOR INCREASED TOOL LIFE

## ULTIMA® TOOL STEEL

### Boost Punching Productivity!

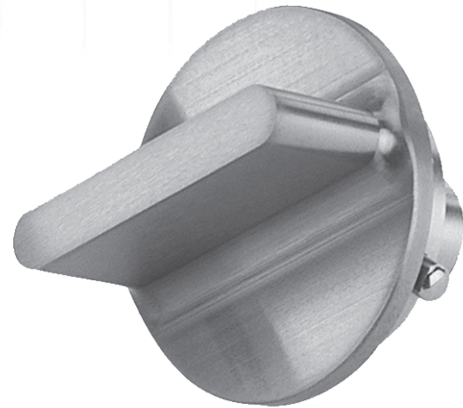
#### Tool Steel for Longer Life

When faced with demanding applications that require long-term wear resistance and toughness, turn to Wilson's new Ultima® Premium Tool Steel. Ultima® punches and dies are engineered to increase wear resistance by up to 100% over conventional tool steels.

#### A New Level of Performance

Ultima® premium tool steel sets a new benchmark for durability and performance. Ultima® punches and dies are designed to dramatically improve tool life when punching abrasive materials and materials with high tensile strength.

Ultima® excels in applications in which punches and dies wear quickly and is ideal for long running tasks. The premium steel from which Ultima® punches and dies are made significantly reduces micro chipping on the cutting edge. This micro chipping is most often where cutting edge failure begins.



#### Remarkable Downtime Reductions

With up to twice as long between re-grinds, Ultima® premium steel significantly reduces downtime and tool replacement costs. Breaking, chipping, cracking, tool fatigue and other downtime problems are minimised, providing long term gains in productivity and profitability.

Ultima® tools are especially useful for the toughest punch press applications, but are effective in any job. Viability can be determined by conducting a cost benefit analysis.

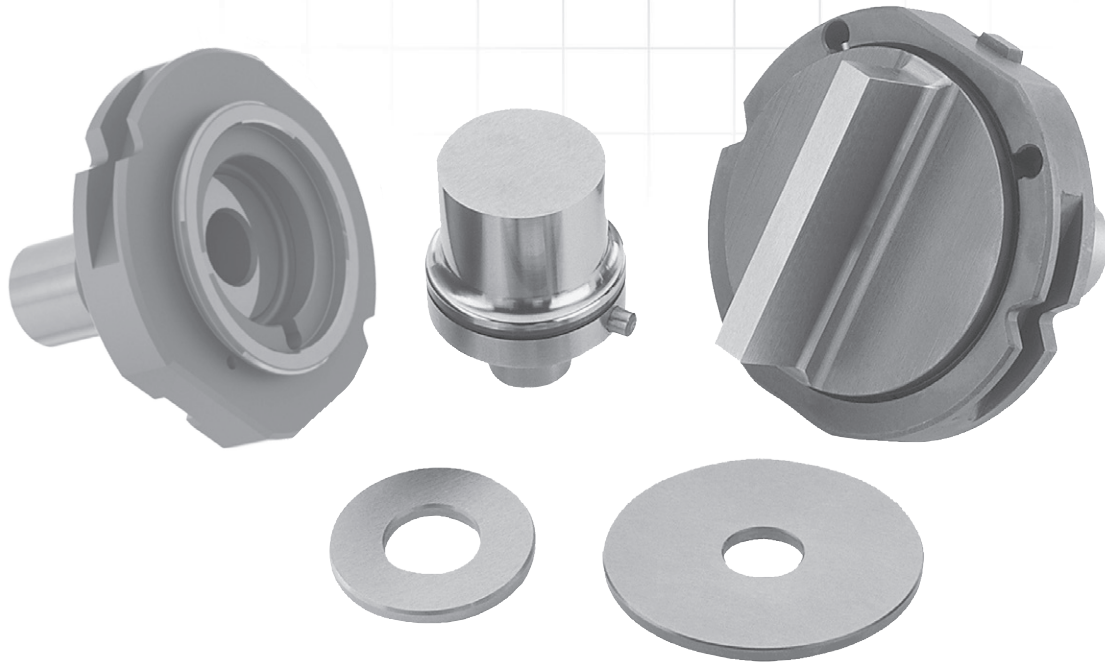
Maintenance and sharpening may differ from traditional tooling. Please check with your local Sales Engineer or the Sales Desk.

# Ultima®

PREMIUM TOOL STEELS

## FEATURES AND BENEFITS

The new Wilson 2•4•1™ Series Punches feature a unique design that incorporates a high precision spacer. This feature increases grind life to an unprecedented 6 mm, which represents twice the amount of grind life previously available.



## OTHER VALUE-ADDED FEATURES INCLUDE:

- **Built-in collar**

Punches can be loaded directly into the machine, eliminating the time consuming process of pre-setting the tool in a fixture.

- **Reduced scrap**

The angular position of the punch is fixed, thus eliminating the possibilities of setting errors or the tool moving whilst in the machine.

- **Increased reliability**

There is no chance of high usage punches moving in the collar while under a heavy load.

- **High quality steels**

Wilson 2•4•1™ punches are made from High Speed Steel as standard, and are available in Ultima® premium steel for extended life, more hits between sharpening and less downtime.

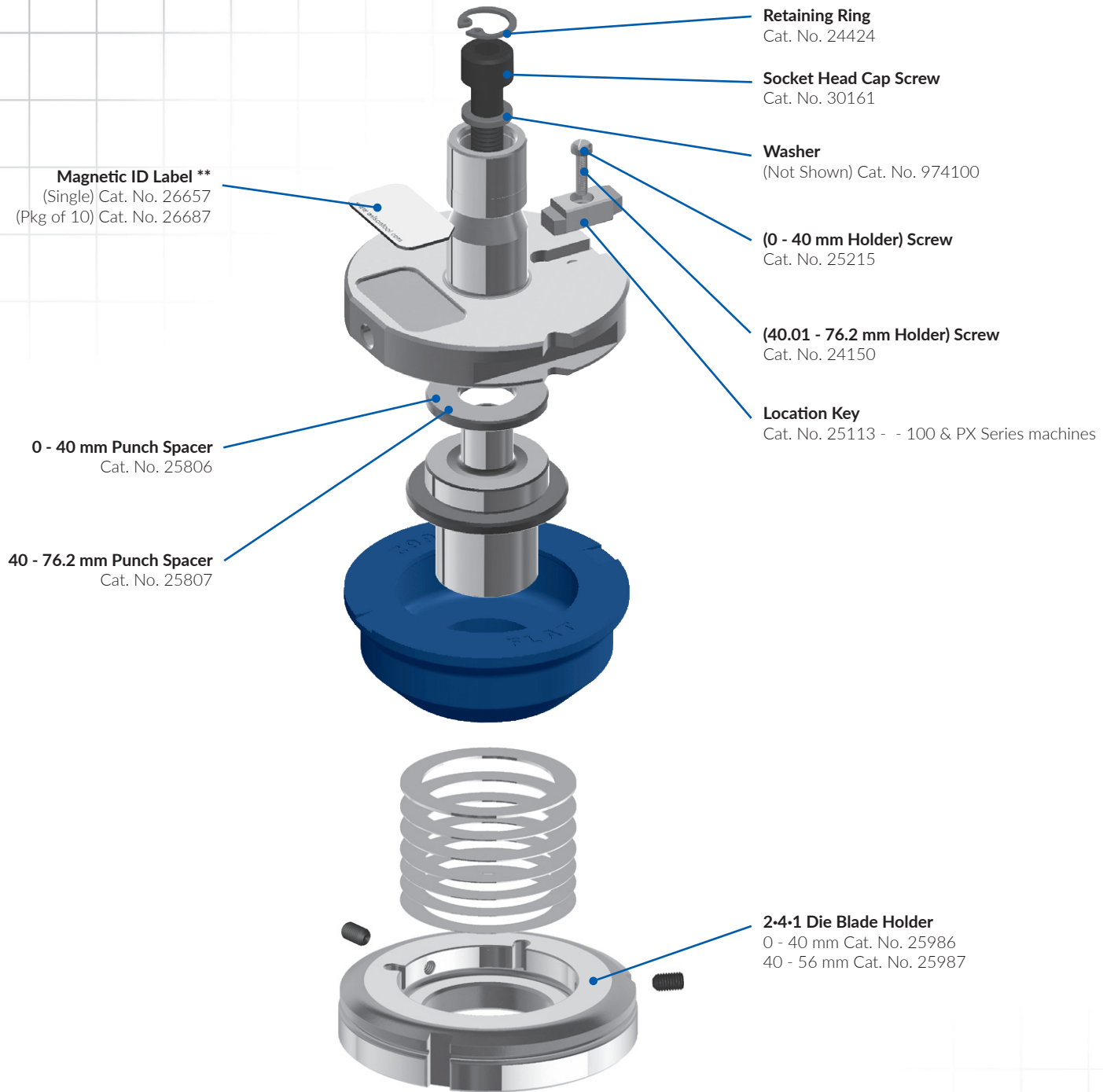
- **Optima® Coating**

All punches are available with our Optima® coating for maximum tool life and increased resistance to galling.

- **Fast delivery**

We maintain the largest inventory of tooling in the world, making it possible for us to get your tools to you fast!

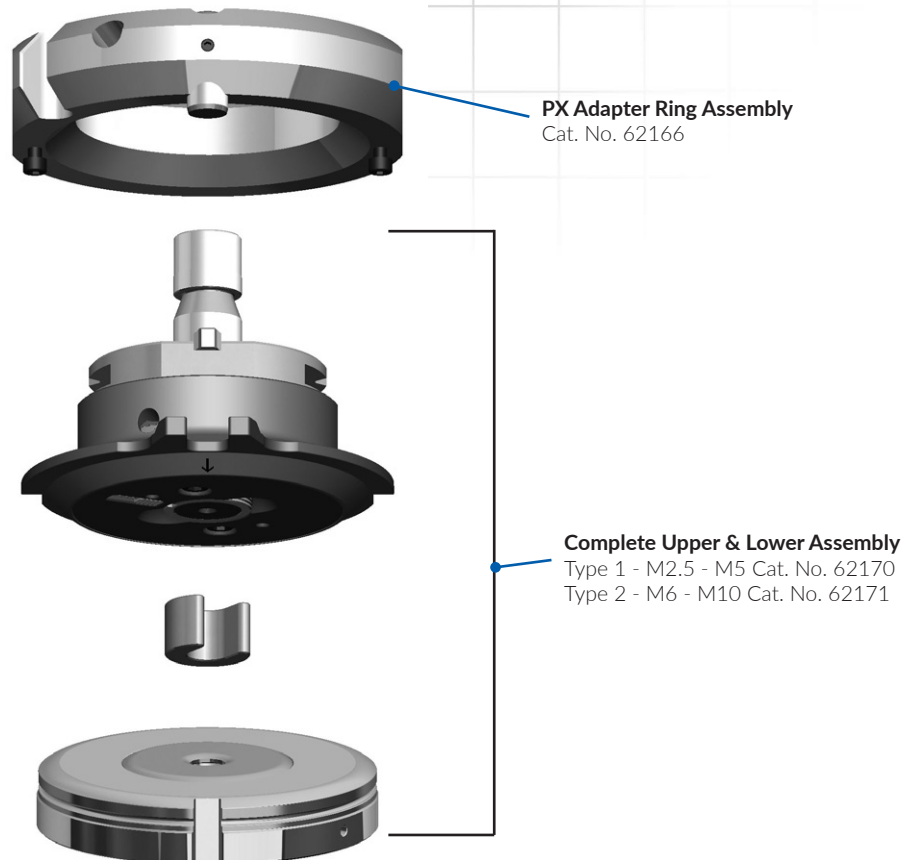
# WILSON 2•4•1™ SERIES COMPONENT PARTS - PUNCH SYSTEM



MACHINES	DESCRIPTION	SIZE	CAT. NO.	PRICE
100 & PX Series	Punch Holder Assembly (0° & 90°)	0 - 40 mm	26659	
	Punch Holder Assembly (0° & 90°)	40.01 - 76.2 mm	26660	

## FEATURES AND BENEFITS

The Wilson Tapping Tool for LVD/PX machines can be used to produce a thread in a punched or extruded hole in sheet metal. The Tapping Tool forms the thread rather than cutting, giving a stronger thread without generating swarf.



## ADVANTAGES OF USING THE WILSON TOOL TAPPING TOOL

- **Higher tensile strength for stronger threaded holes**

The Tapping Tool forms the thread rather than cutting. The sheet metal undergoes strain hardening while forming, increasing the tensile strength of the tapped hole. Increased tensile strength means that holes produced with the Tapping Tool can replace weld nuts, removing the need for expensive secondary operations away from your punch press.

- **Swarf-free**

Producing threaded holes with the Tapping Tool is a clean operation. As the material grain is pushed to the thread shape and not cut, the Tapping Tool generates no swarf.

- **Cost benefits**

Producing tapped holes on your punch press is a “Lean” process, with no need for high-cost secondary tapping operations. In addition, sheet metal thicknesses can sometimes be reduced by tapping extruded holes.

- **Wide range of taps**

Taps are available in the following standard sizes: M2.5, M3, M3.5, M4, M5, M6, M8 and M10. Imperial taps and alternative fits are available on request.

**\* Note: Tapping Tool requires machine tapping option. Check with LVD prior to purchase.**

# INCREASED GRIND LIFE (GL) DIES

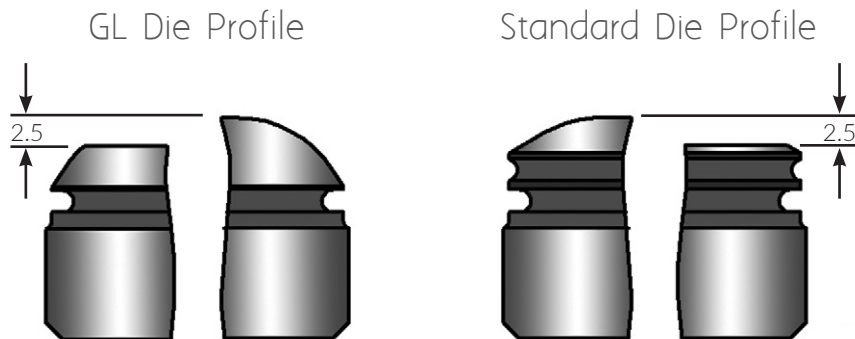
## FEATURES AND BENEFITS

Cut your costs and save valuable time by increasing your grind life up to 150% with Wilson's 'GL' (Grind Life) dies. This product enables you to shim your dies up to 2.5 mm instead of the current 1.0 mm maximum.



## GL DIE

The radius profile of the GL die has been changed to allow up to 2.5 mm of grind life, while still having radius left to allow the sheet to flow over the top of the die.





### WANT TO REDUCE YOUR SET-UP TIMES? THEN TRY OUR PRE-CUT STRIPPERS.

The pre-cut strippers are precisely cut to match the profile of the punch, with the ability to assemble the stripper to the punch prior to loading into the machine.

The pre-cut stripper has the advantage of being easier to fit to the punch assemblies compared to a stripper which is punched.

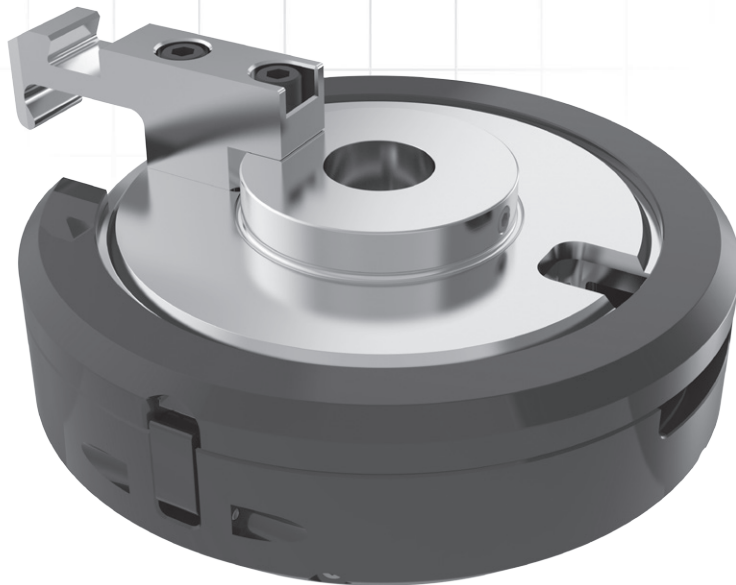
This reduces set-up times and also eliminates the cumbersome, manual method of punching the strippers whilst in the machine.



SIMPLY QUOTE YOUR PUNCH SHAPE AND  
DIMENSIONS AND WE WILL CUT THE STRIPPER  
APERTURE FOR YOU.

Suitable for all PX urethane stripper machines.

# ADJUSTABLE TOOL HOLDER



This holder is designed to allow the overall length to be adjusted to suit the punch length. Something the old holder could not do. Compatible with both the new PX series machines and the older 520, 720, 530 & 730 machines.

## The advantage is as follows:

- Can now run Long 2•4•1 /Classic Style Tooling.
- Up to 15 - 20% improvement in hit rate during continuous punching.
- Hit rate is maintained during the life of the tool.

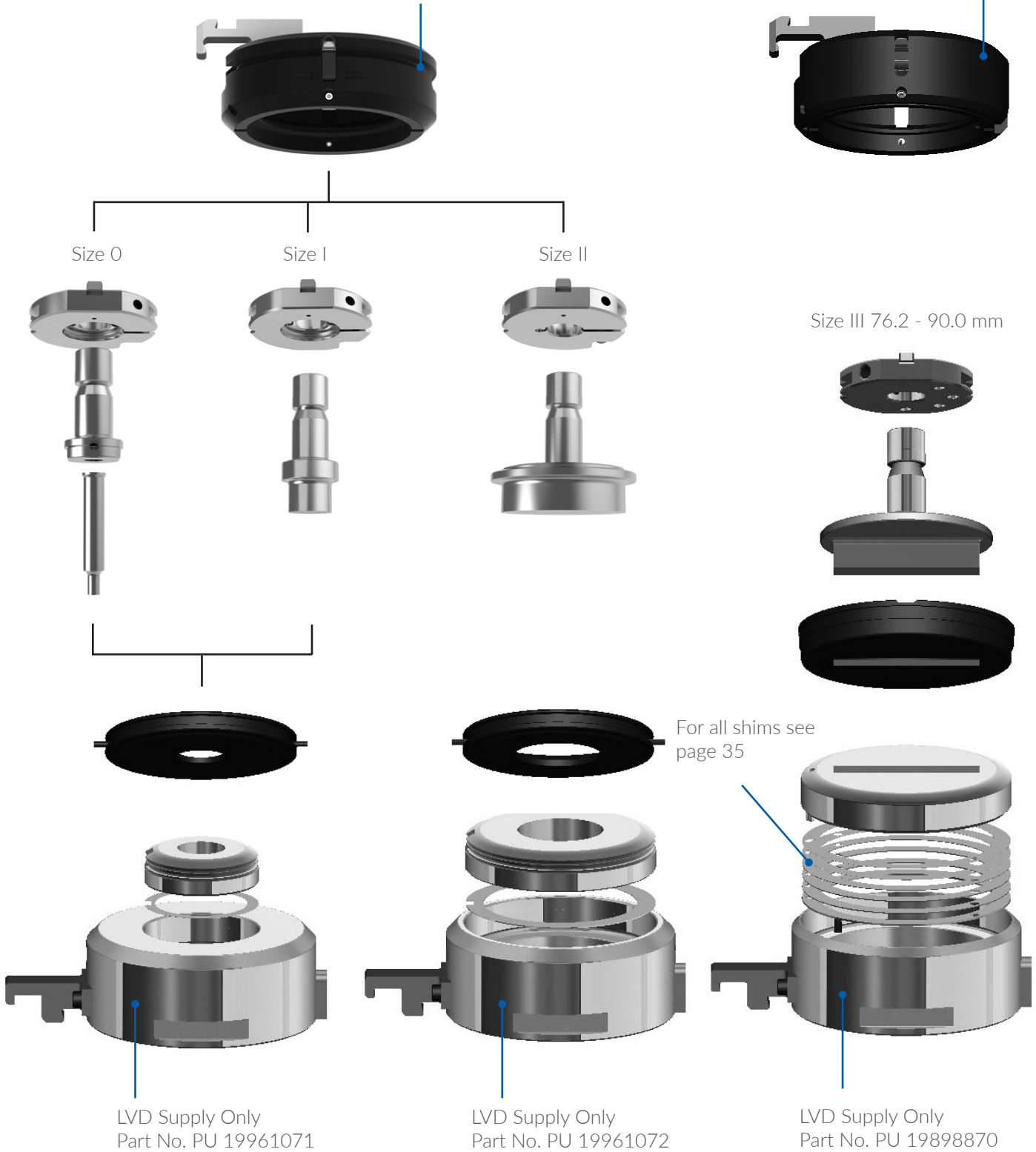
**NOTE:** This part is LVD supply only.

# CLASSIC PUNCH HOLDER ASSEMBLY

## Steel Stripping for Classic Style Tooling

**Adjustable Tool Holder**  
LVD Supply Only  
Part No. PU 78001357

**Adjustable Tool Holder**  
LVD Supply Only  
Part No. PU 19742070



520  
530  
720  
730  
PX Series

# 2•4•1™ PUNCH HOLDER ASSEMBLY

## Steel Stripping for 2•4•1 Style Tooling

### Adjustable Tool Holder

LVD Supply Only  
Part No. PU 78001357

### Standard Tool Holder

LVD Supply Only  
Part No. PU 19742070



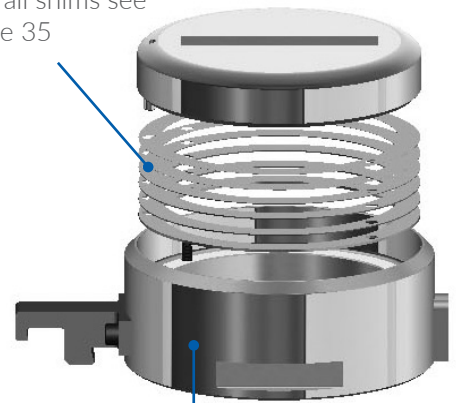
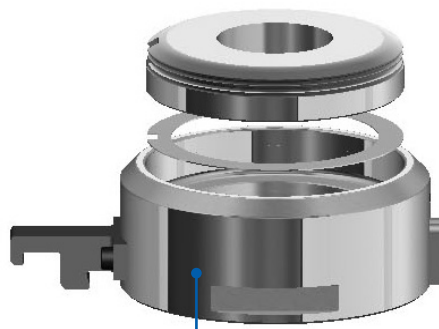
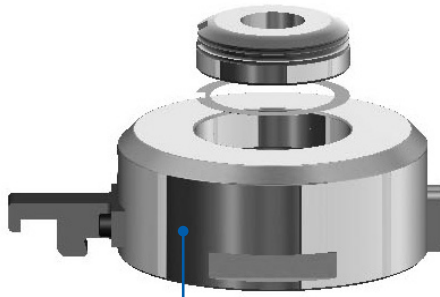
2•4•1 0 - 40.0 mm

2•4•1 40.0 - 76.2 mm

Size III 76.2 - 90.0 mm



For all shims see  
page 35



LVD Supply Only  
Part No. PU 19961071

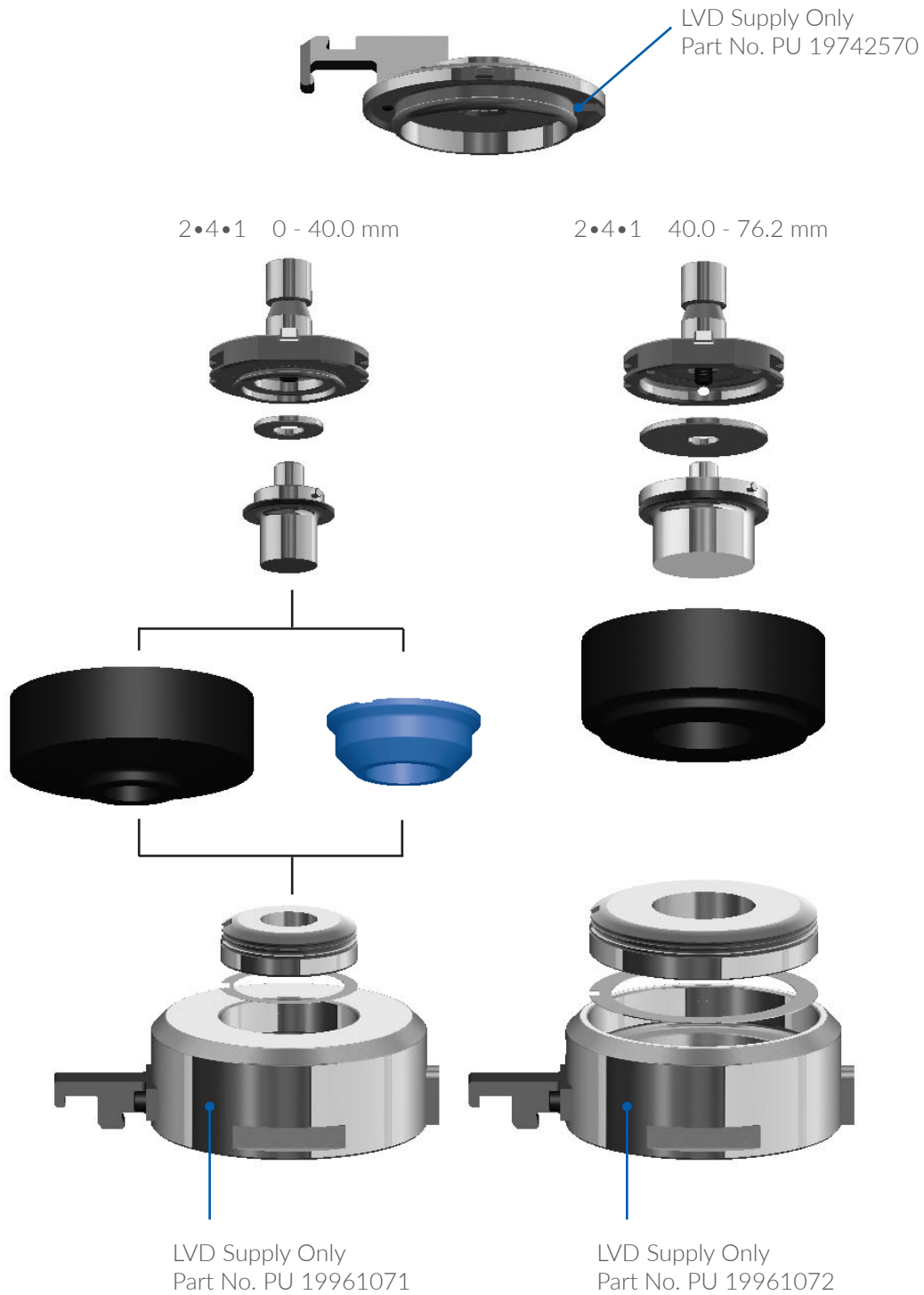
LVD Supply Only  
Part No. PU 19961072

LVD Supply Only  
Part No. PU 19898870

PX Series 520 530 720 730

# 2•4•1™ PUNCH HOLDER ASSEMBLY

## Urethane Stripping for 2•4•1 Style Tooling



520

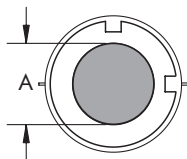
530

720

730

PX Series

# WILSON 2•4•1™ SERIES - ROUND



Punches Round

GROUP I - LONG FLAT*	FLAT PUNCH	SHEAR PUNCH
----------------------	------------	-------------



**NOTES**

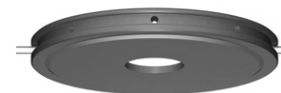
- To see all standard shapes go to page 39
- For Size III tooling see page 18 & 19
- \* Long tooling style requires 'Adjustable Tool Holder', see page 10
- † Flat
- ◇ Shear
- \*\* With pins

'A' DIMENSION	CAT. NO.	PRICE	CAT. NO.	PRICE	CAT. NO.	PRICE	ADD-ON FOR OPTIMA®	ADD-ON FOR ULTIMA®
1.50 - 30.00	25770		25768		25769			
30.01 - 40.00	25776		25774		25775			
40.01 - 56.00	25782		25780		25781			
56.01 - 66.00	25788		25786		25787			
66.01 - 76.20	25794		25792		25793			

Strippers

**URETHANE STRIPPER**

**METAL STRIPPER**



'A' DIMENSION	CAT. NO.	PRICE	'A' DIMENSION	CAT. NO.	PRICE	'A' DIMENSION	CAT. NO.	PRICE
1.50 - 30.00	62133 C		0 - 30.00 †	26661		1.50 - 76.20**	25006	
30.01 - 76.20	62132 C		30.00 - 40.00 †	26662				
			0 - 30.00 ◇	26649				
			30.00 - 40.00 ◇	26652				

Dies

**GL DIE**



SIZE	'A' DIMENSION	CAT. NO.	PRICE
I	1.50 - 30.00	26739	
II	30.01 - 76.20	26727	

Punch Holder

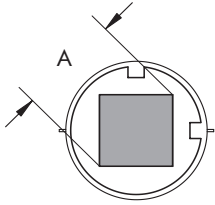
**PUNCH HOLDER ASSEMBLY**



SIZE	CAT. NO.	PRICE
0 - 40 mm	26659	
40.01 - 76.2 mm	26660	

# WILSON 2•4•1™ SERIES - SQUARE

Punches Square



## GROUP I - LONG FLAT\*

## FLAT PUNCH

## SHEAR PUNCH



## NOTES

- To see all standard shapes go to page 39
- For Size III tooling see page 18 & 19
- \* Long tooling style requires 'Adjustable Tool Holder', see page 10
- † Flat
- ◇ Shear
- \*\* With pins

'A' DIMENSION	CAT. NO.	PRICE	CAT. NO.	PRICE	CAT. NO.	PRICE	ADD-ON FOR OPTIMA®	ADD-ON FOR ULTIMA®
1.50 - 30.00	25818		25814		25816			
30.01 - 40.00	25824		25820		25822			
40.01 - 56.00	25830		25826		25828			
56.01 - 66.00	25836		25832		25834			
66.01 - 76.20	25842		25838		25840			

Strippers

## URETHANE STRIPPER

## METAL STRIPPER



'A' DIMENSION	CAT. NO.	PRICE	'A' DIMENSION	CAT. NO.	PRICE	'A' DIMENSION	CAT. NO.	PRICE
1.50 - 30.00	62133 C		0 - 30.00 †	26661		1.50 - 76.20**	25515	
30.01 - 76.20	62132 C		30.00 - 40.00 †	26662				
			0 - 30.00 ◇	26649				
			30.00 - 40.00 ◇	26652				

Dies

## GL DIE



SIZE	'A' DIMENSION	CAT. NO.	PRICE
I	1.50 - 30.00	26744	
II	30.01 - 76.20	26748	

Punch Holder

## PUNCH HOLDER ASSEMBLY



SIZE	CAT. NO.	PRICE
0 - 40 mm	26659	
40.01 - 76.2 mm	26660	

# WILSON 2•4•1™ SERIES - RECTANGLE

520

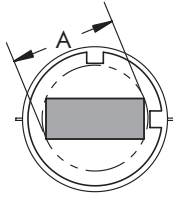
530

720

730

PX Series

Punches Rectangle



## GROUP I - LONG FLAT\*

## FLAT PUNCH

## SHEAR PUNCH



## NOTES

- To see all standard shapes go to page 39
- For Size III tooling see page 18 & 19
- \* Long tooling style requires 'Adjustable Tool Holder', see page 10
- † Flat
- ◇ Shear
- \*\* With pins

'A' DIMENSION	CAT. NO.	PRICE	CAT. NO.	PRICE	CAT. NO.	PRICE	ADD-ON FOR OPTIMA®	ADD-ON FOR ULTIMA®
1.50 - 30.00	25819		25815		25817			
30.01 - 40.00	25825		25821		25823			Standard
40.01 - 56.00	25831		25827		25829			
56.01 - 66.00	25837		25833		25835			
66.01 - 76.20	25843		25839		25841			

Strippers

## URETHANE STRIPPER

## METAL STRIPPER



'A' DIMENSION	CAT. NO.	PRICE	'A' DIMENSION	CAT. NO.	PRICE	'A' DIMENSION	CAT. NO.	PRICE
1.50 - 30.00	62133 C		0 - 30.00 †	26661		1.50 - 76.20**	25516	
30.01 - 76.20	62132 C		30.00 - 40.00 †	26662				
			0 - 30.00 ◇	26649				
			30.00 - 40.00 ◇	26652				

Dies

## GL DIE



SIZE	'A' DIMENSION	CAT. NO.	PRICE
I	1.50 - 30.00	26745	
II	30.01 - 76.20	26749	

Punch Holder

## PUNCH HOLDER ASSEMBLY



SIZE	CAT. NO.	PRICE
0 - 40 mm	26659	
40.01 - 76.2 mm	26660	



# WILSON 2•4•1™ SERIES - STANDARD SHAPES

Punches Standard Shapes

**GROUP I - LONG FLAT\***      **FLAT PUNCH**      **SHEAR PUNCH**



**NOTES**

- To see all standard shapes go to page 39
- For Size III tooling see page 18 & 19
- \* Long tooling style requires 'Adjustable Tool Holder', see page 10
- † Flat
- ◇ Shear
- \*\* With pins

'A' DIMENSION	CAT. NO.	PRICE	CAT. NO.	PRICE	CAT. NO.	PRICE	ADD-ON FOR OPTIMA®	ADD-ON FOR ULTIMA®
1.50 - 30.00	25773		25771		25772			
30.01 - 40.00	25779		25777		25778			
40.01 - 56.00	25785		25783		25784			
56.01 - 66.00	25791		25789		25790			
66.01 - 76.20	25797		25795		25796			

Strippers

**URETHANE STRIPPER**

**METAL STRIPPER**



'A' DIMENSION	CAT. NO.	PRICE	'A' DIMENSION	CAT. NO.	PRICE	'A' DIMENSION	CAT. NO.	PRICE
1.50 - 30.00	62133 C		0 - 30.00 †	26661		1.50 - 76.20**	25028	
30.01 - 76.20	62132 C		30.00 - 40.00 †	26662				
			0 - 30.00 ◇	26649				
			30.00 - 40.00 ◇	26652				

Dies

**GL DIE**



SIZE	'A' DIMENSION	CAT. NO.	PRICE
I	1.50 - 30.00	26740	
II	30.01 - 76.20	26726	

Punch Holder

**PUNCH HOLDER ASSEMBLY**



SIZE	CAT. NO.	PRICE
0 - 40 mm	26659	
40.01 - 76.2 mm	26660	

520  
530  
720  
730  
PX Series

# SIZE III - ROUND

Punches Round

FLAT PUNCH

SHEAR PUNCH



NOTES

- To see all standard shapes go to page 39

'A' DIMENSION	CAT. NO.	PRICE	CAT. NO.	PRICE	ADD-ON FOR OPTIMA®
76.2 - 90 mm	62140		62141		

KEYED COLLAR



STRIPPER



Strippers

CAT. NO.	PRICE
25317	

'A' DIMENSION	CAT. NO.	PRICE
76.2 - 90 mm	62126	

Dies

DIE INSERT



'A' DIMENSION	CAT. NO.	PRICE
76.2 - 90 mm	62127	

520

530

720

730

PX Series

# SIZE III - STANDARD SHAPES

Punches Standard Shapes

**FLAT PUNCH**      **SHEAR PUNCH**



NOTES
<ul style="list-style-type: none"> <li>To see all standard shapes go to page 39</li> <li>For shims see page 35</li> </ul>

'A' DIMENSION	CAT. NO.	PRICE	CAT. NO.	PRICE	ADD-ON FOR OPTIMA®
76.2 - 90 mm	62142		62143		

Strippers

**KEYED COLLAR**



CAT. NO.	PRICE
25317	

**STRIPPER**



'A' DIMENSION	CAT. NO.	PRICE
76.2 - 90 mm	62126	

Dies

**DIE INSERT**



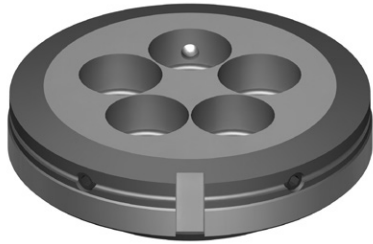
'A' DIMENSION	CAT. NO.	PRICE
76.2 - 90 mm	62127	

520  
530  
720  
730  
PX Series

# MULTI-TOOL 5 STATION

## Assemblies/Replacement Punches and Dies

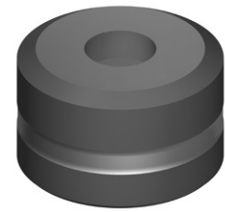
Maximum Punch Size 16 mm



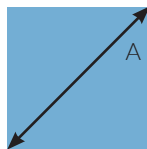
CAT. NO.	DESCRIPTION	PRICE
62146	100 Series - 5 Station Upper Unit - Assembly	
25957	PX Series - 5 Station Upper Unit - Assembly	
25958	5 Station Lower Unit - Assembly	
25959	5 Station Stripper with 17 mm Holes	
25960	5 Station Fitted Stripper	

**PUNCH (ULTIMA®)**

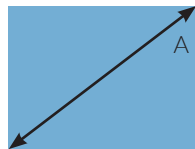
**DIE (ULTIMA®)**



CAT. NO.	PRICE	ADD-ON FOR OPTIMA®	CAT. NO.	PRICE
25735		-*	25737	



CAT. NO.	PRICE	ADD-ON FOR OPTIMA®	CAT. NO.	PRICE
25869			25871	



CAT. NO.	PRICE	ADD-ON FOR OPTIMA®	CAT. NO.	PRICE
25870			25872	

### NOTES

\* Round punches Optima® coated as standard

† For standard shapes see page 39

• For brushed dies see page 34

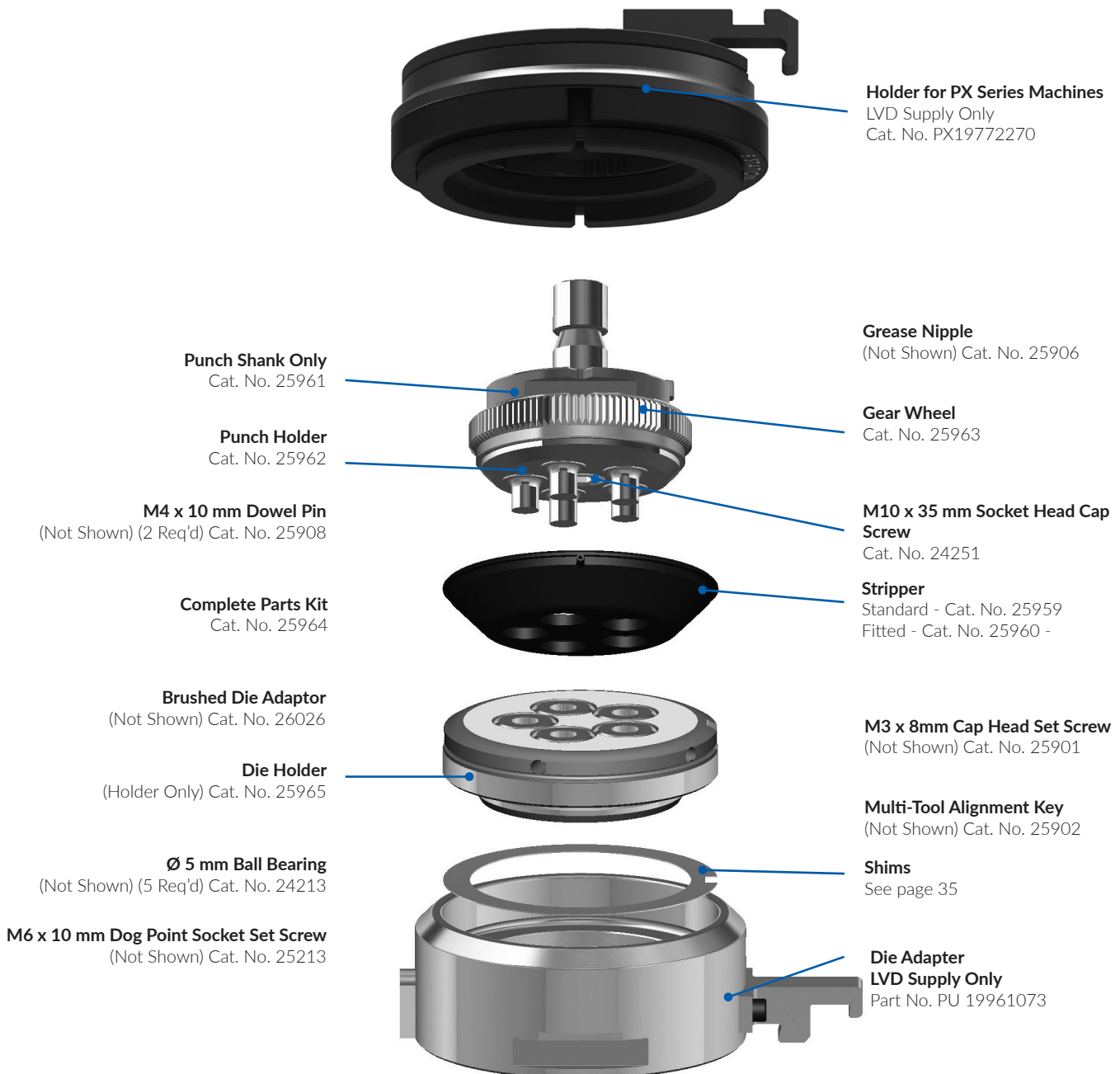
**Standard Shapes †**

CAT. NO.	PRICE	ADD-ON FOR OPTIMA®	CAT. NO.	PRICE
25736			25738	

520  
530  
720  
730  
PX Series

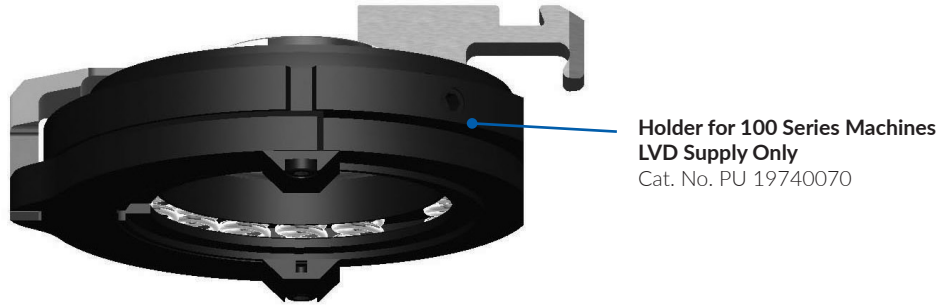
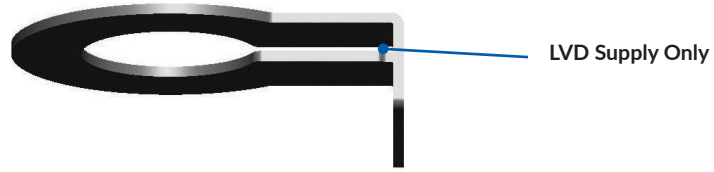
# MULTI-TOOL 5 STATION FOR PX SERIES MACHINES

## Spare Parts



# MULTI-TOOL 5 STATION FOR 100 SERIES MACHINES

## Spare Parts



Punch Shank Only  
Cat. No. 62150

Grease Nipple  
(Not Shown) Cat. No. 25906

Punch Holder  
Cat. No. 25962

Gear Wheel  
Cat. No. 62151

M4 x 10 mm Dowel Pin  
(Not Shown) (2 Req'd) Cat. No. 25908

M10 x 35 mm Socket Head Cap  
Screw  
Cat. No. 24251

Complete Parts Kit  
Cat. No. 62152

Stripper  
Standard - Cat. No. 25959  
Fitted Cat. No. 25960

Die Holder  
(Holder Only) Cat. No. 25965

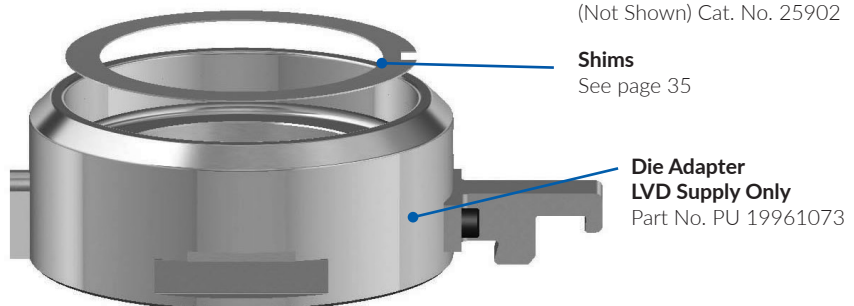
M3 x 8 mm Cap Head Set Screw  
(Not Shown) Cat. No. 25901

Ø 5 mm Ball Bearing  
(Not Shown) (5 Req'd) Cat. No. 24213

Multi-Tool Alignment Key  
(Not Shown) Cat. No. 25902

M6 x 10 mm Dog Point Socket Set Screw  
(Not Shown) Cat. No. 25213

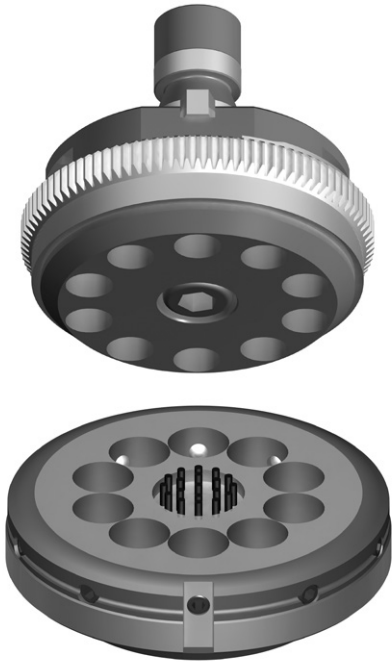
Shims  
See page 35



730  
720  
530  
520

## Assemblies/Replacement Punches and Dies

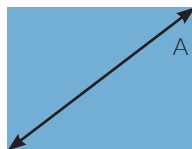
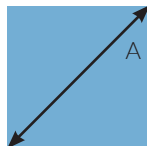
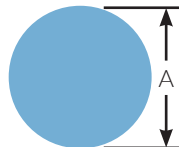
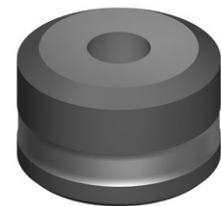
Maximum Punch Size 10.5 mm



CAT. NO.	DESCRIPTION	PRICE
62147	100 Series - 10 Station Upper Unit - Assembly	
25967	PX Series - 10 Station Upper Unit - Assembly	
25985	10 Station Lower Unit - Assembly	
25969	10 Station Stripper with 11.5 mm Holes	
25970	10 Station Fitted Stripper	

**PUNCH (ULTIMA®)**

**DIE (ULTIMA®)**



CAT. NO.	PRICE	ADD-ON FOR OPTIMA®	CAT. NO.	PRICE
25809		-*	25996	

CAT. NO.	PRICE	ADD-ON FOR OPTIMA®	CAT. NO.	PRICE
25873			25997	

CAT. NO.	PRICE	ADD-ON FOR OPTIMA®	CAT. NO.	PRICE
25874			25997	

CAT. NO.	PRICE	ADD-ON FOR OPTIMA®	CAT. NO.	PRICE
25810			25997	

### NOTES

- \* Round punches Optima® coated as standard
- † For standard shapes see page 39
- For shims see page 35
- For brushed dies see page 34

**Standard Shapes †**

520

530

720

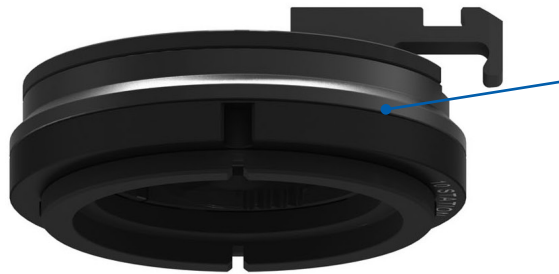
730

PX Series

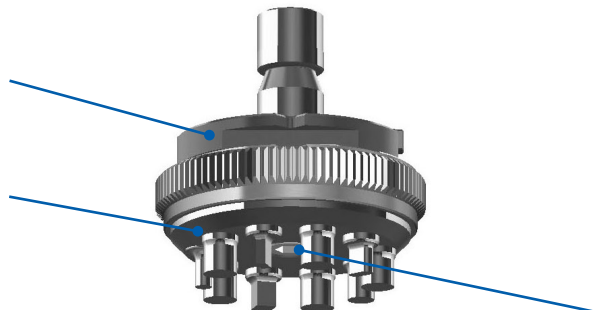
# MULTI-TOOL 10 STATION FOR PX SERIES MACHINES

## Spare Parts

PX Series



**Holder for PX Series Machines  
LVD Supply Only**  
Part No. PX19772370



**Punch Shank Only**  
Cat. No. 25961

**Multi-Tool Alignment Key**  
(Not Shown) Cat. No. 25902

**Punch Holder**  
Cat. No. 25971

**Grease Nipple**  
(Not Shown) Cat. No. 25906

**M4 x 10 mm Dowel Pin**  
(Not Shown) (2 Req'd) Cat. No. 25908

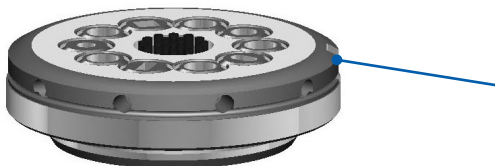
**Gear Wheel**  
Cat. No. 25972

**M10 x 35 mm Socket Head Cap Screw**  
Cat. No. 24251



**Complete Parts Kit**  
Cat. No. 25973

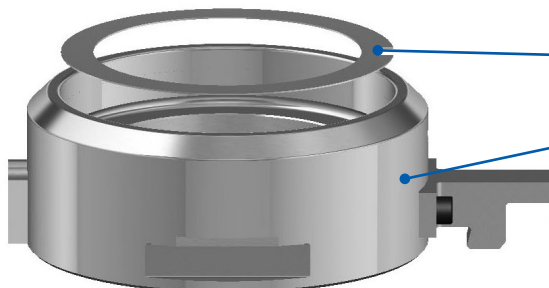
**Stripper**  
Standard - Cat. No. 25969  
Fitted - Cat. No. 25970



**Die Holder**  
(Holder Only) Cat. No. 25994

**M3 x 8 mm Cap Head Set Screw**  
(Not Shown) Cat. No. 25901

**Ø 5 mm Ball Bearing**  
(Not Shown) (10 Req'd) Cat. No. 24213



**Shims**  
See page 35

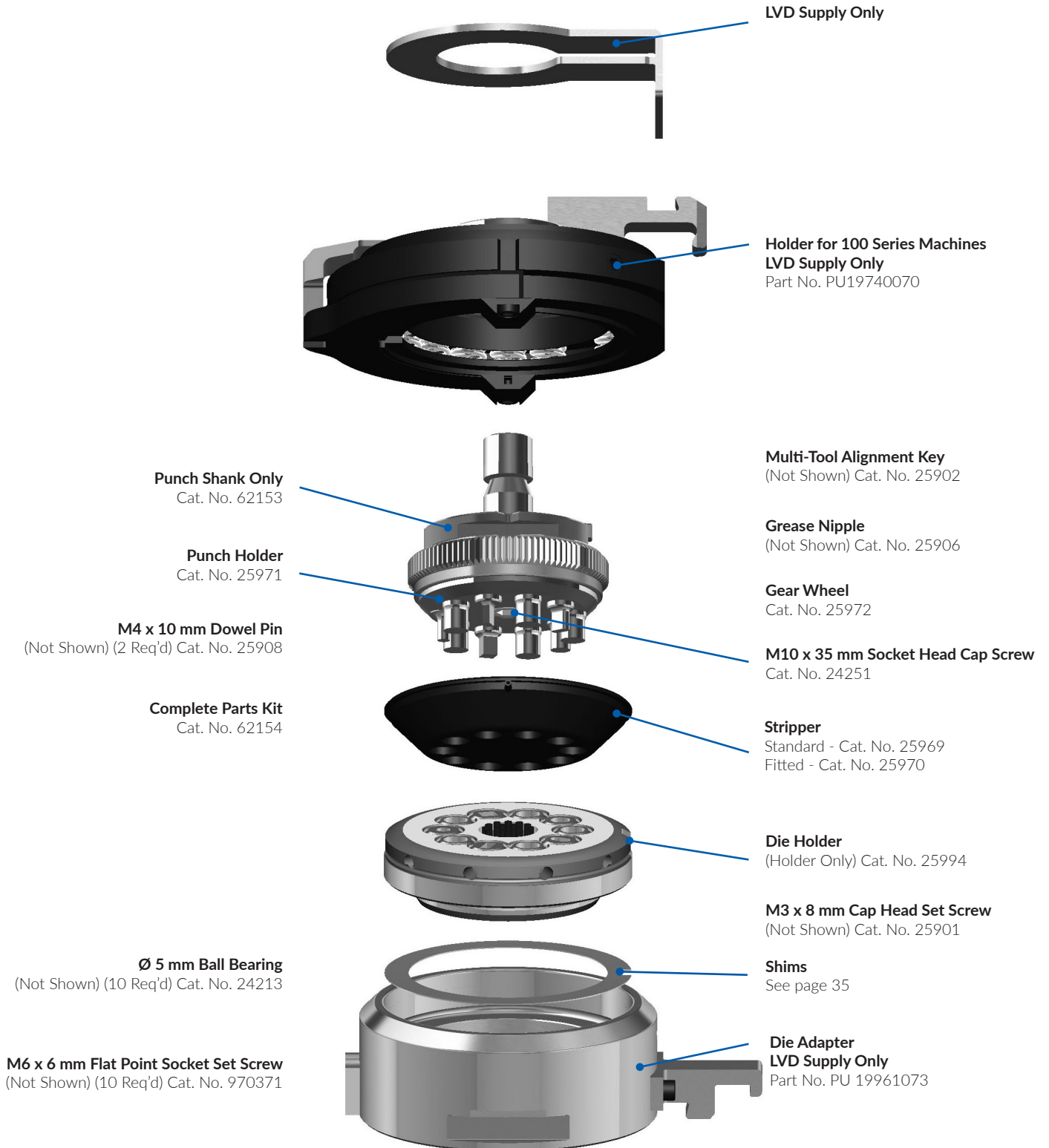
**Die Adapter  
LVD Supply Only**  
Part No. PU 19961073

**M6 x 6 mm Flat Point Socket Set Screw**  
(Not Shown) (10 Req'd) Cat. No. 970371



# MULTI-TOOL 10 STATION FOR 100 SERIES MACHINES

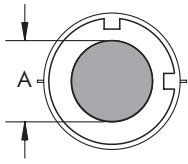
## Spare Parts



730  
720  
530  
520

# STANDARD TOOLS - ROUND SIZE 0

Punches (High Speed Steel)



## STANDARD FLAT



## NOTES

† Part number followed by 'C' indicates pre-cut stripper  
\* With pins

SIZE	'A' DIMENSION	CAT. NO.	PRICE	ADD-ON FOR OPTIMA®
0	1.50 - 6.00	25008		
0	6.01 - 10.50	25009		

Strippers

## URETHANE STRIPPER



## METAL STRIPPER



'A' DIMENSION	CAT. NO.	PRICE
1.50 - 30.00	62133 C †	
30.01 - 76.20	62132 C †	

'A' DIMENSION	CAT. NO.	PRICE
1.50 - 76.20*	25006	

Dies

## GL DIE



SIZE	'A' DIMENSION	CAT. NO.	PRICE
I	0 - 32.00	26739	

## ALL GROUPS

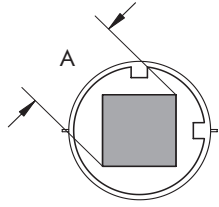


Punch Chucks

SIZE	CAT. NO.	PRICE
0 - 6.00	25010	
6.01 - 10.50	25021	

# STANDARD TOOLS - SQUARE SIZE 0

Punches (High Speed Steel)



## STANDARD FLAT



## NOTES

- † Part number followed by 'C' indicates pre-cut stripper
- \* With pins

SIZE	'A' DIMENSION	CAT. NO.	PRICE	ADD-ON FOR OPTIMA®
0	1.50 - 6.00	25475		
0	6.01 - 10.50	25477		

Strippers

## URETHANE STRIPPER



## Metal Stripper



'A' DIMENSION	CAT. NO.	PRICE
1.50 - 30.00	62133 C †	
30.01 - 76.20	62132 C †	

'A' DIMENSION	CAT. NO.	PRICE
1.50 - 76.20*	25515	

Dies

## GL DIE



SIZE	'A' DIMENSION	CAT. NO.	PRICE
I	0 - 32.00	26744	

## ALL GROUPS



Punch Chucks

SIZE	CAT. NO.	PRICE
0 - 6.00	25010	
6.01 - 10.50	25021	

520

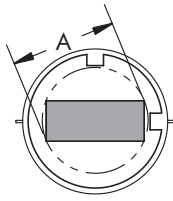
530

720

730

PX Series

# STANDARD TOOLS - RECTANGLE SIZE 0



## STANDARD FLAT



## NOTES

- † Part number followed by 'C' indicates pre-cut stripper
- \* With pins

SIZE	'A' DIMENSION	CAT. NO.	PRICE	ADD-ON FOR OPTIMA®
0	1.80 - 6.00	25476		
0	6.01 - 10.50	25478		

Punches (High Speed Steel)

## URETHANE STRIPPER



## METAL STRIPPER



'A' DIMENSION	CAT. NO.	PRICE
1.50 - 30.00	62133 C †	
30.01 - 76.20	62132 C †	

'A' DIMENSION	CAT. NO.	PRICE
1.50 - 76.20*	25516	

Strippers

## GL DIE



## ALL GROUPS



SIZE	'A' DIMENSION	CAT. NO.	PRICE
I	0 - 32.00	26745	

SIZE	CAT. NO.	PRICE
0 - 6.00	25010	
6.01 - 10.50	25021	

Dies

Punch Chucks

# STANDARD TOOLS - STANDARD SHAPES SIZE 0

Punches (High Speed Steel)

## STANDARD FLAT



## NOTES

- † Part number followed by 'C' indicates pre-cut stripper
- \* With pins
- For more information on standard shapes, see page 39

SIZE	'A' DIMENSION	CAT. NO.	PRICE	ADD-ON FOR OPTIMA®
0	1.50 - 6.00	25022		
0	6.01 - 10.50	25023		

Strippers

## URETHANE STRIPPER



## METAL STRIPPER



'A' DIMENSION	CAT. NO.	PRICE
1.50 - 30.00	62133 C †	
30.01 - 76.20	62132 C †	

'A' DIMENSION	CAT. NO.	PRICE
1.50 - 76.20*	25028	

Dies

## GL DIE



SIZE	'A' DIMENSION	CAT. NO.	PRICE
I	0 - 32.00	26740	

## ALL GROUPS



Punch Chucks

SIZE	CAT. NO.	PRICE
0 - 6.00	25010	
6.01 - 10.50	25021	

520

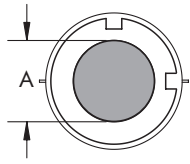
530

720

730

PX Series

# STANDARD TOOLS - ROUND SIZE I & II



» GROUP I LONG FLAT      SHEAR PUNCH      FLAT PUNCH



Punches (High Speed Steel)

SIZE	'A' DIMENSION	CAT. NO.	PRICE	CAT. NO.	PRICE	CAT. NO.	PRICE	ADD-ON FOR OPTIMA®
I	1.50 - 10.50	25748		-		25004		
I	10.51 - 30.00	25748		25069		25004		
II	30.01 - 40.00	25752		25071		25042		
II	40.01 - 50.00	25756		25072		25043		
II	50.01 - 76.20	25760		25073		25002		

Strippers

URETHANE STRIPPER      METAL STRIPPER



'A' DIMENSION	CAT. NO.	PRICE
1.50 - 30.00	62133 C †	
30.01 - 76.20	62132 C †	

'A' DIMENSION	CAT. NO.	PRICE
1.50 - 76.20*	25006	
1.50-76.20**	62144	

Dies

GL DIE



SIZE	'A' DIMENSION	CAT. NO.	PRICE
I	0 - 32.00	26739	
II	32.01 - 78.00	26727	

**NOTES**

† Part number followed by 'C' indicates pre-cut stripper

\* With pins

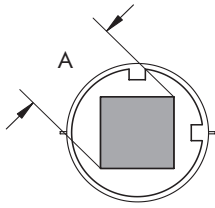
\*\* Without pins

» Long tooling style requires 'Adjustable Tool Holder', see page 10

PX Series 730 720 530 520

# STANDARD TOOLS - SQUARE SIZE I & II

Punches (High Speed Steel)



» GROUP I LONG FLAT

SHEAR PUNCH

FLAT PUNCH



SIZE	'A' DIMENSION	CAT. NO.	PRICE	CAT. NO.	PRICE	CAT. NO.	PRICE	ADD-ON FOR OPTIMA®
I	1.50 - 10.50	25749		-		25487		
I	10.51 - 30.00	25749		25489		25487		
II	30.01 - 40.00	25753		25493		25491		
II	40.01 - 50.00	25757		25503		25501		
II	50.01 - 76.20	25761		25513		25511		

Strippers

URETHANE STRIPPER

METAL STRIPPER



'A' DIMENSION	CAT. NO.	PRICE
1.50 - 30.00	62133 C †	
30.01 - 76.20	62132 C †	

'A' DIMENSION	CAT. NO.	PRICE
1.50 - 76.20*	25515	
1.50-76.20**	62145	

Dies

GL DIE

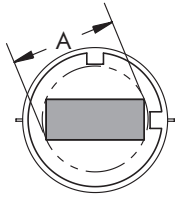


SIZE	'A' DIMENSION	CAT. NO.	PRICE
I	0 - 32.00	26744	
II	32.01 - 78.00	26748	

NOTES

- † Part number followed by 'C' indicates pre-cut stripper
- \* With pins
- \*\* Without pins
- » Long tooling style requires 'Adjustable Tool Holder', see page 10

# STANDARD TOOLS - RECTANGLE SIZE I & II



» GROUP I LONG FLAT

SHEAR PUNCH

FLAT PUNCH



Punches (High Speed Steel)

SIZE	'A' DIMENSION	CAT. NO.	PRICE	CAT. NO.	PRICE	CAT. NO.	PRICE	ADD-ON FOR OPTIMA®
I	1.50 - 12.00	25750		-		25488		
I	12.01 - 30.42	25750		25490		25488		
II	30.43 - 40.40	25754		25494		25492		
II	40.41 - 50.36	25758		25504		25502		
II	50.37 - 76.40	25762		25514		25512		

URETHANE STRIPPER

METAL STRIPPER



Strippers

'A' DIMENSION	CAT. NO.	PRICE
1.50 - 30.00	62133 C †	
30.01 - 76.20	62132 C †	

'A' DIMENSION	CAT. NO.	PRICE
1.50 - 76.20*	25516	
1.50-76.20**	62145	

GL DIE



Dies

SIZE	'A' DIMENSION	CAT. NO.	PRICE
I	0 - 32.00	26745	
II	32.01 - 78.00	26749	

NOTES

- † Part number followed by 'C' indicates pre-cut stripper
- \* With pins
- \*\* Without pins
- » Long tooling style requires 'Adjustable Tool Holder', see page 10



# STANDARD TOOLS - STANDARD SHAPES SIZE I & II

Punches (High Speed Steel)

» GROUP I LONG FLAT

SHEAR PUNCH

FLAT PUNCH



SIZE	'A' DIMENSION	CAT. NO.	PRICE	CAT. NO.	PRICE	CAT. NO.	PRICE	ADD-ON FOR OPTIMA®
I	1.50 - 12.00	25751		-		25026		
I	12.01 - 30.42	25751		25063		25026		
II	30.43 - 40.40	25755		25065		25039		
II	40.41 - 50.36	25759		25066		25040		
II	50.37 - 76.40	25763		25067		25001		

Strippers

URETHANE STRIPPER

METAL STRIPPER



'A' DIMENSION	CAT. NO.	PRICE
1.50 - 30.00	62133 C †	
30.01 - 76.20	62132 C †	

'A' DIMENSION	CAT. NO.	PRICE
1.50 - 76.20*	25028	
1.50-76.20**	62145	

Dies

GL DIE



SIZE	'A' DIMENSION	CAT. NO.	PRICE
I	0 - 32.00	26740	
II	32.01 - 78.00	26726	

NOTES

- † Part number followed by 'C' indicates pre-cut stripper
- \* With pins
- \*\* Without pins
- For more information on standard shapes, see page 39
- » Long tooling style requires 'Adjustable Tool Holder', see page 10

520

530

720

730

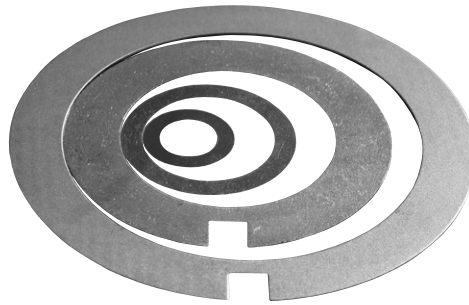
PX Series

# BRUSHED DIES



Available in most die types, brushed dies are designed to reduce sheet metal marking, even when punching thin materials.

DESCRIPTION	CAT. NO.	PRICE	FEATURES
5 Station Multi-Tool Die Assembly	26026		<ul style="list-style-type: none"> <li>• <b>Improved finish.</b> The brushed dies are designed to allow the material to ride smoothly over the die and ensure that marking is kept to an absolute minimum.</li> <li>• <b>Practical.</b> Brushes are made of hard wearing nylon and can be shimmed as they wear. When they eventually wear out they are quick and easy to replace.</li> <li>• <b>Less waste.</b> Costly slug pulling is significantly reduced because you can run your machine with the vacuum on, even when punching extremely thin materials.</li> </ul>
10 Station Multi-Tool Die Assembly	26027		
Size I/II Die Adapter	25939		
Standard Die (Maximum 56 mm 'A' Dimension)	26025		
Standard Die (For Slitting - Maximum 10 mm Wide)	26037		



## Size 1, 2 & 3 Dies

SIZE 1 DIE			
THICKNESS	QTY	CAT. NO.	PRICE
0.1	1	25299	
0.3	1	25300	
0.5	1	25301	
1.0	5	26753	
PACKAGE DESCRIPTION		CAT. NO.	PRICE
2 x 0.1 mm, 1 x 0.3 mm, 1 x 0.5 mm		25181	
SIZE 2 DIE			
THICKNESS	QTY	CAT. NO.	PRICE
0.1	1	25296	
0.3	1	25297	
0.5	1	25298	
1.0	5	26752	
PACKAGE DESCRIPTION		CAT. NO.	PRICE
2 x 0.1 mm, 1 x 0.3 mm, 1 x 0.5 mm		25182	
SIZE 3 DIE			
PACKAGE DESCRIPTION		CAT. NO.	PRICE
1 x 1.0 mm, 2 x 0.5 mm, 1 x 0.3 mm, 2 x 0.1 mm		62203	

## Multi Tool Dies

5 STATION MULTI TOOL DIE		
PACKAGE DESCRIPTION	CAT. NO.	PRICE
2 x 0.1 mm, 1 x 0.3 mm, 1 x 0.5 mm	26003	
10 STATION MULTI TOOL DIE		
PACKAGE DESCRIPTION	CAT. NO.	PRICE
2 x 0.1 mm, 1 x 0.3 mm, 1 x 0.5 mm	25995	

520

530

720

730

PX Series

# CLOSE-TO-FORM SLITTING PUNCH

## Punch DuraBlade



DESCRIPTION	CAT. NO.	PRICE
Complete punch assembly (includes shims)	62247	
Punch insert only	26781	
2.5 mm shim pack	26789	

## Wilson 2•4•1 Punch Assembly



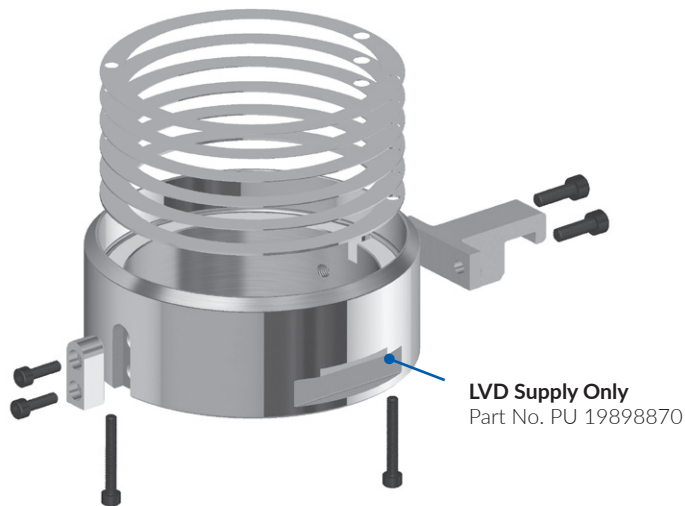
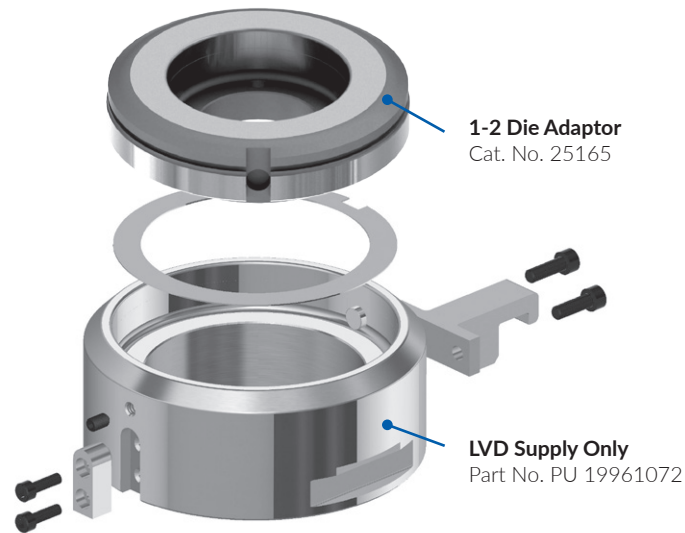
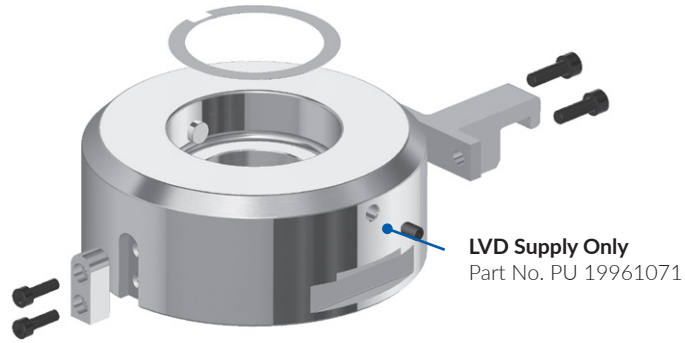
DESCRIPTION	30-60mm x 5mm		60-76.2mm x 5mm	
	CAT. NO.	PRICE	CAT. NO.	PRICE
Complete Punch Assembly	26802		26800	
Punch Only	26803		26801	
Urethane Strippers (Pair)	26760		26762	

## Standard Punch Assembly



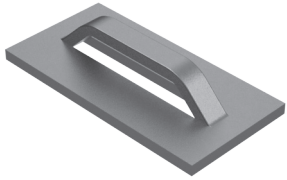
DESCRIPTION	30-60mm x 5mm		60-76.2mm x 5mm	
	CAT. NO.	PRICE	CAT. NO.	PRICE
Complete Punch Assembly**	26761		26763	
Punch Only	25586		25589	
Urethane Strippers (Pair)	26760		26762	

\*\*Punch Alignment Collar 25139 required for this product

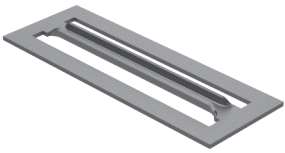


**Note:** Some adapters shown on this page are O.E.M supply and are shown for illustration purposes only. Please contact your local LVD/Pullmax dealer for more information.

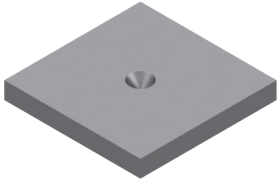
# SPECIALS



Bridge



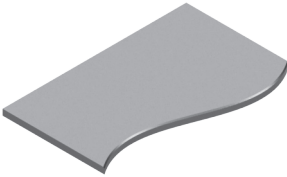
Card Guide



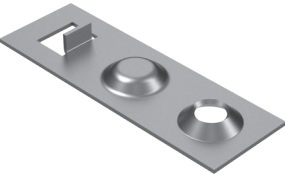
Centre Punch



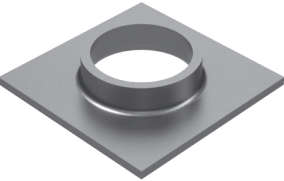
Coining



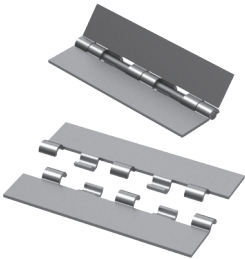
Deburr



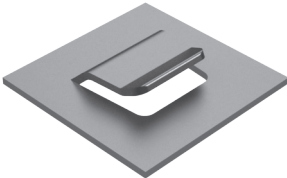
Emboss



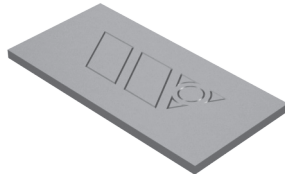
Extrusion



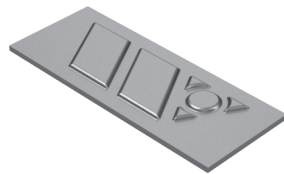
Hinge Tools



Lance and Form



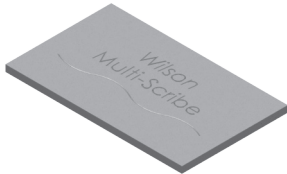
Logo Coining



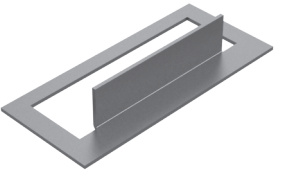
Logo Emboss



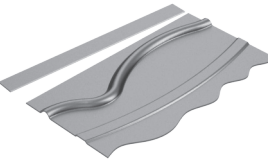
Louvre



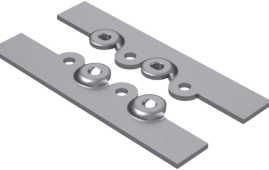
Multiscribe



Optibend



Wheel Tools



Zip-Tech

An extensive range of special tooling is also available for LVD/PX style machines, contact your local Wilson Tool representative for more details or email [sales@wilsontool.eu.com](mailto:sales@wilsontool.eu.com).







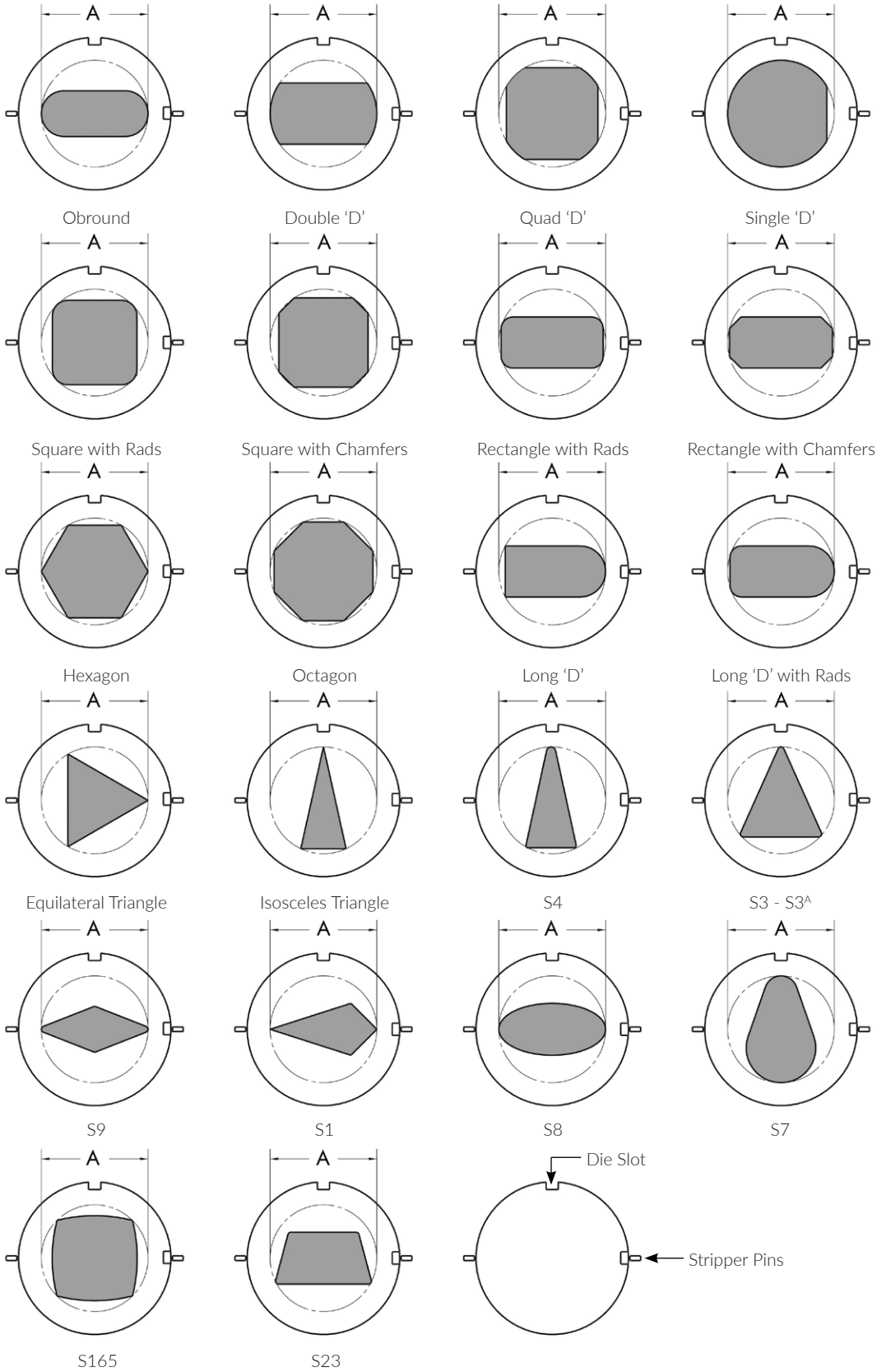


# TERMS AND CONDITIONS

<b>Order</b>	Minimum order is
<b>Credit</b>	All orders are subject to the approval of our credit department. If you are a new account, please furnish us with a bank reference and three supplier references. A credit limit will be imposed on new accounts until credit has been established.
<b>Payment</b>	Terms are net 30 days.
<b>Cancellation</b>	In the event an order is cancelled, a charge will be made to cover labour, materials and overheads.
<b>Returned Material</b>	A handling charge of 25% is made on all standard parts returned for credit. Written permission and shipping instructions must be obtained before the return of any material. Special tooling cannot be returned.
<b>Claims</b>	All claims for shortages must be made within 3 days of the invoice date.
<b>Prices</b>	Prices and specifications subject to change without prior notice. E & O E. All prices are exclusive of VAT.
<b>Delivery Charge</b>	All orders are subject to a delivery charge. Please call the sales desk for a delivery quotation.

# STANDARD SHAPES

The following shapes are all available at standard shape prices



## WORLD HEADQUARTERS

### Wilson Tool International - United States

Tel (Free): 800-328-9646 | Tel: 651-286-6001  
Fax (Free): 800-222-0002 | Fax: 651-286-5959  
e-mail: sales@wilsontool.com

## NORTH AMERICA

### Wilson Tool - Canada

Punching and Stamping Division  
Tel: 800-268-5573 | Fax: 800-668-9314  
e-mail: punching@wilsontoolcanada.com

### Wilson Tool - Canada

Press Brake Division  
Tel: 800-268-4180 | Fax: 905-840-1032  
e-mail: bending@wilsontoolcanada.com

### Wilson Tool - Mexico

Tel: 52 (81) 8865-4820 | Fax: 52 (81) 8865-4599  
e-mail: americalatina@wilsontool.com

## SOUTH AMERICA

### Wilson Tool - Argentina

Tel: +54 114 799 6519  
e-mail: ventassudamerica@wilsontool.com

### Milling Ferramentas - Brazil

Tel/Fax: 55 11 5621-2100  
e-mail: vendas@milling.com.br

## CHINA / PACIFIC RIM

### Wilson Tool - China

Tel: +86 21 51089638 | Fax: +86 21 64422195  
e-mail: sales@wilsontool.cn

## EUROPE / MIDDLE EAST / AFRICA

### Wilson Tool - United Kingdom

Tel (Free): 0800-373748 | Tel: +44 1793 831818  
Fax (Free): 0800-373758 | Fax: +44 1793 831945 or 46  
Email: sales@wilsontool.eu.com

### Wilson Tool - Germany

Tel (Free): 00800-9457668665 | Tel: +49 5723 747 0  
Fax (Free): 00800-945766329 | Fax: +49 5723 747 10  
Email: verkauf@wilsontool.eu.com

### Wilson Tool - Denmark

DE. Tel: +45 44 53 1699  
SE. Tel (free): 020 79 14 19  
NO. Tel (free): 800 10 809  
FI. Tel (free): 0800 114 523  
e-mail: salesdk@wilsontool.eu.com

### Wilson Tool - France

Tel: +33 (0) 1 64 13 47 80 | Fax: +33 (0) 1 64 13 47 81  
Email: ventes@wilsontool.eu.com

### Toolspress - Italy

Tel: +39 0521 850510 / 850677  
Fax: +39 0521 850796  
e-mail: info@toolspress.com